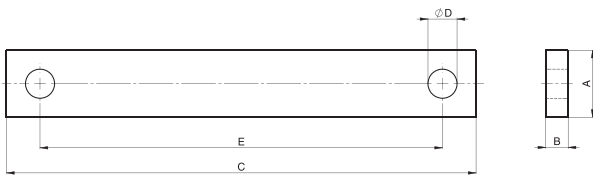


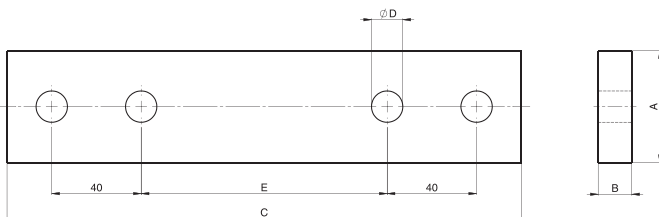
# Primärschienen Primary bus-bars Barres primaires



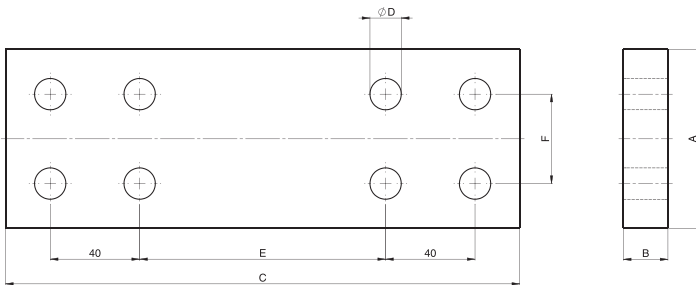
TSC2, TSC4, TGH1.01, TGH1.02, TGC1.01, TGC1.02



TSC5, TSC6, TGC3, TGE1, TGK1



TSC8, TGE3, TGF1



Typ	A	B	C	D	E	F
TSC 2 <sup>1)</sup>	30	10	130	11	100	
TSC 4 <sup>1)</sup>	40	12	150	14	110	
TSC 4 <sup>2)</sup>	40	12	150	14	110	
TGH1.01 <sup>2)</sup>	30	10	140	13	110	
TGH1.02 <sup>2)</sup>	30	10	210	13	180	
TGC1.01 <sup>2)</sup>	40	6	155	13	127	
TGC1.02 <sup>2)</sup>	40	6	220	17	180	

Typ	A	B	C	D	E	F
TSC 5 <sup>1)</sup>	50	15	230	14	110	
TSC 6 <sup>1)</sup>	60	15	230	14	110	
TGC3 <sup>2)</sup>	50	8	210	18	160	
TGK 1 <sup>2)</sup>	50	15	244	18	124	
TGE 1 <sup>2)</sup>	60	15	244	18	124	

Typ	A	B	C	D	E	F
TSC 8 <sup>1)</sup>	80	20	230	14	110	40
TGE 3 <sup>2)</sup>	80	15	244	18	124	40
TGF 1 <sup>2)</sup>	100	20	270	18	150	50

<sup>1)</sup> Cu blank / blank / nu

<sup>2)</sup> Cu vernickelt / nickel plated / nickelé

**PIFFNER Messwandler AG**  
Lindenplatz 17  
5042 Hirschthal/Schweiz

Telefon +41 (0)62 739 28 28  
Telefax +41 (0)62 739 28 10  
E-Mail [sales@pmw.ch](mailto:sales@pmw.ch)  
Internet [www.pmw.ch](http://www.pmw.ch)



HOCHSPANNUNG | HIGH VOLTAGE

MITTELSPANNUNG | MEDIUM VOLTAGE

NIEDERSPANNUNG | LOW VOLTAGE